



PREDESIGNATED MEETING AREA

ON EAST MALL BETWEEN HENNING BUILDING AND STUDENT UNION BUILDING

EMERGENCY INSTRUCTIONS

If you discover a fire or explosion in the building:

- 1 Immediately activate the closest fire alarm/pull station.
- 2 Call 911.
- 3 Give the address and the nearest intersection (6163 UNIVERSITY BOULEVARD at the intersection of University Blvd. & East Mall)
- 4 Provide information about the emergency: Where is the fire? (Ground floor, room # ____), How fast the fire is spreading? Are there people trapped?
- 5 If it is safe, control the fire.
- 6 Isolate the fire by closing doors behind you. Do not lock the doors.
- 7 Leave by the nearest safe exit.
- 8 Walk. Do not run. Shut doors behind you. On leaving the building move well away. Do not block road access.
- 9 Do not go back in the building for any reason until the all-clear has been announced by emergency personnel.
- 10 If you hear the fire alarm ringing - Follow steps 6 through 8 above.

In the event of a fire DO NOT USE ELEVATOR(s).

(See the map to your left for the location of all fire extinguishers, fire alarm/pull stations, safe exits and areas of refuge)

FOR EMERGENCIES CALL 911

— LEGEND —



FIRE EXIT



PULL STATION/
FIRE ALARM



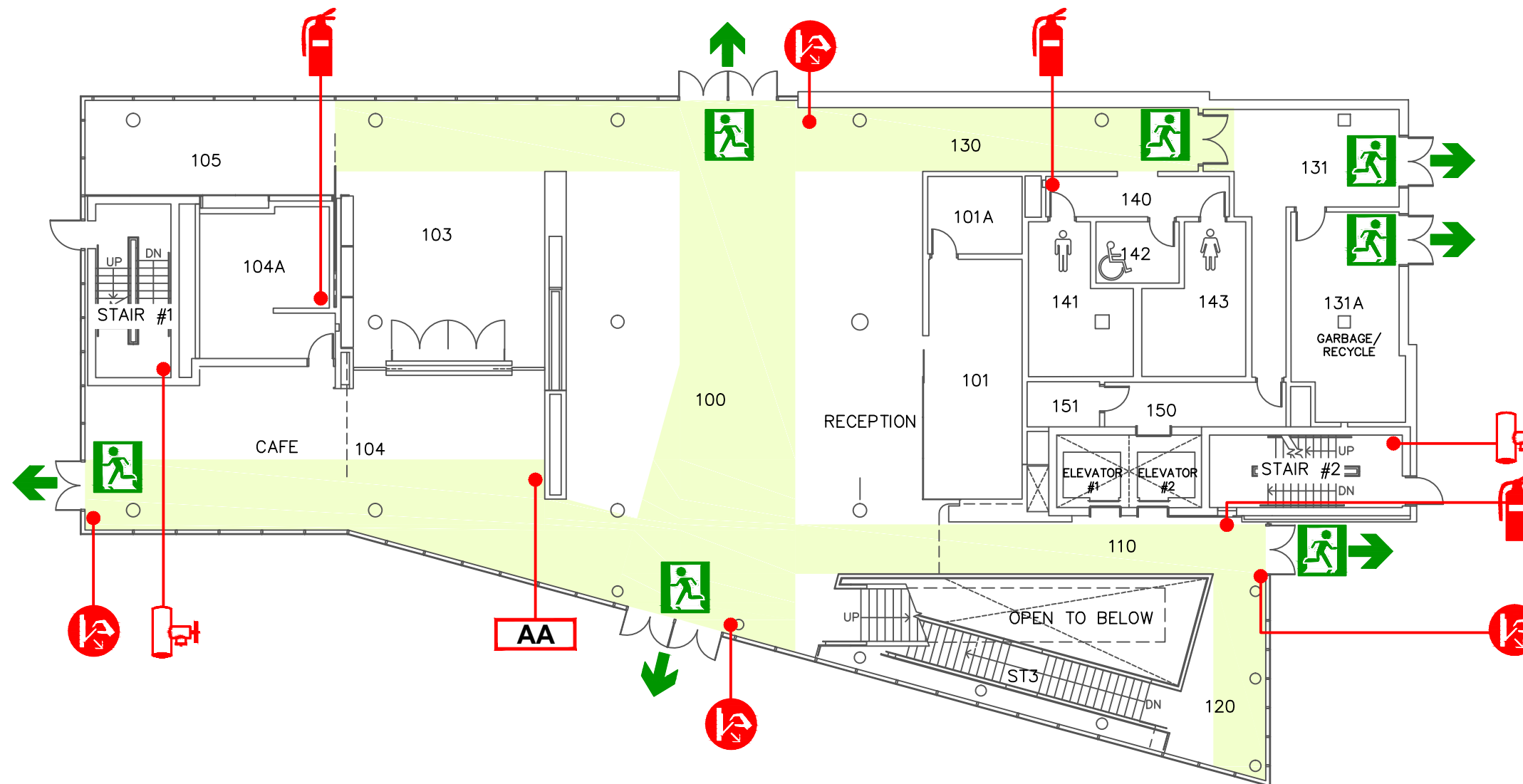
FIRE
EXTINGUISHER



FIRE ALARM
ANNUNCIATOR



STANDPIPE
CONNECTION



GROUND FLOOR PLAN
N.T.S.